

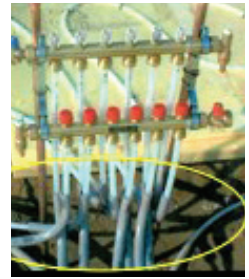


EZROUTE™

www.theEZRoute.com

Left: Example of install using EZ Route system. Easy, Organized and professional look.

Conduit 90's
Right: Example of install using conduit 90's!. Time consuming, unprofessional finish!



Compare!

EZ Route Premier -vs- Conduit 90's

12 Loop EZ Route Premier

24 Conduit 90's

Average Contractor Cost:

\$70.00

\$39.40

Supporting installation materials needed:

No additional materials needed.

\$10.00

Labor to install based on \$50/hr rate:

5 minutes = \$4.15

1/hr. = \$50.00

Total Cost:

\$74.15

\$99.40

Overall savings:

\$25.25

Compare!

EZ Route Radius -vs- Conduit 90's

12 Loop EZ Route Radius

24 Conduit 90's

Average Contractor Cost:

\$48.00

\$39.40

Supporting installation materials needed:

\$1.85

\$10.00

Labor to install based on \$50/hr rate:

10 minutes = \$8.30

1/hr. = \$50.00

Total Cost:

\$58.15

\$99.40

Overall savings:

\$41.25



EZ Route Premier or Radius product will give you that clean professional finish that you and your customers are looking for while saving time and money! Our **EZ Route Straight** product keeps both the tubes and manifolds up out of the way of the mason pour with no additional tools or materials needed. Perfect for that manifold station being located out in the middle of a room.